

# Stylish and secure

uPVC Patio Doors



# Let the light flood in

Enhance your home with our revolutionary Patio Doors, offering low profile thresholds to cater for the needs of today's homeowner.



Ultra slim sightlines allow for the maximum amount of light to flood any room.

With a high security locking system, our Patio Doors are far stronger and more secure than any other product on the market.

## KEY DETAILS

---

Yale high security locking

---

Multi-chambered profiles

---

Energy efficient

---

Beautiful aesthetics

---

Superior weatherability

---

## Add a splash of colour

To ensure the perfect match, all our uPVC doors and frames are available in a wide choice of colours.

Creating the look you want has never been easier.



**'Air-Glide' system**  
Multi-wheeled running system keeps perfect balance for smooth and silent operation.



**Child friendly**  
The locking mechanism has a 'Finger-Trap-Free' design to protect small children.



**Clever thresholds**  
Wrap-over design prevents scuff marks. Low threshold and ramp options are also available.



**Maximum security**  
High tensile steel shootbolts provide additional locking points at both head and sill.

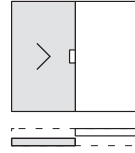




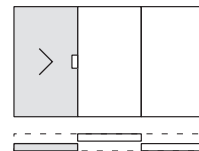
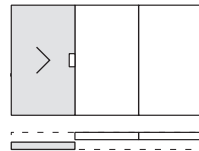
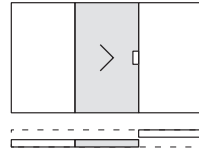
# Configuration options

Available in 2, 3 and 4 panes, our range of Patio Doors can be tailored to your exact requirements.

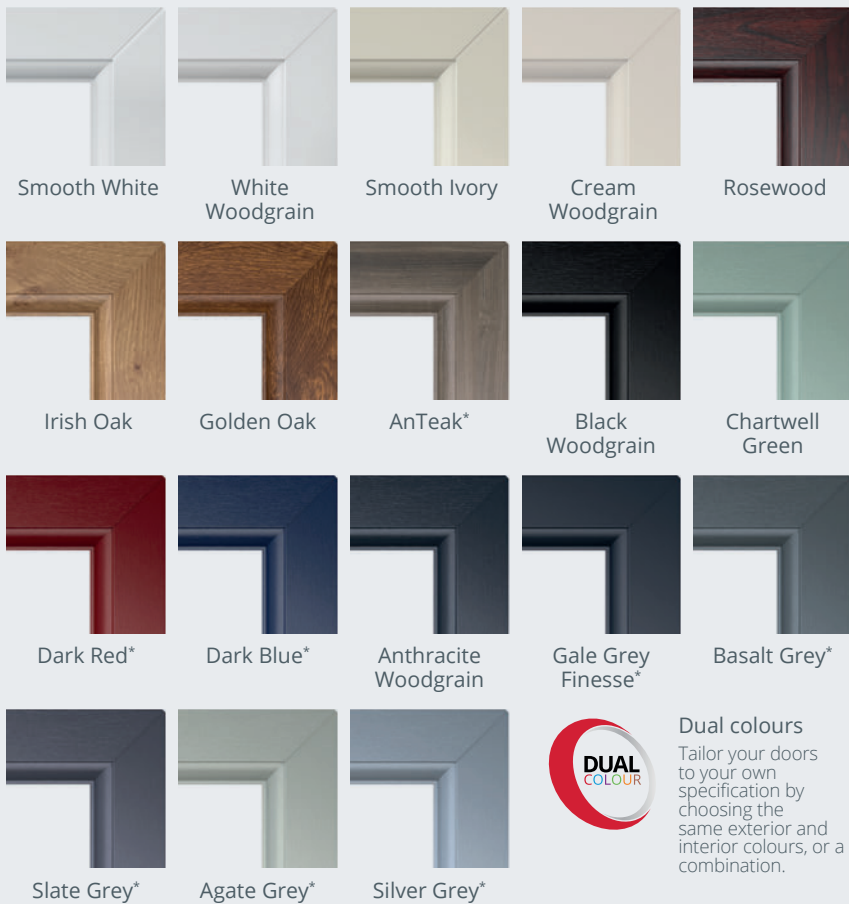
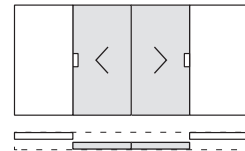
## 2 pane option



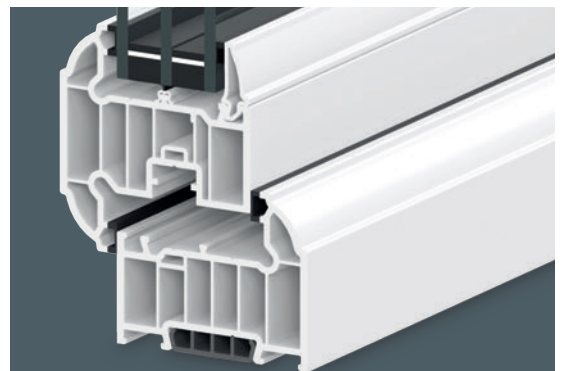
## 3 pane options



## 4 pane options



\*Longer lead times required



## Energy efficiency

Our residential doors come with the Liniar range of multi-chambered profiles as standard, achieving the highest possible BFRC Energy Ratings in the industry.

# Security built in

All our uPVC doors come with a high-security multipoint locking mechanism as standard, providing your home with the protection it deserves.

## Additional security

TS-007 3-star accredited cylinders are available as an optional extra with all of our door locks, proven to effectively combat against lock snapping and forced entry.



### High security

Awarded the Police 'Secured by Design' accreditation, our multipoint locks have been rigorously tested to the very highest security standards.



### British built

Production, testing and assembly of all our door locking systems, are carried out in the UK.



### Intelligent locking

Intelligent, compact and robust locks, which work perfectly with the design of our doors.



### 10 year guarantee

The multipoint locking system comes with a 10 year guarantee as standard, providing complete peace of mind.

1

### Pre-compression rollers

Ensures smooth operation and maximises weather proofing.

2

### Anti-lift pins

Slots into the frame to prevent the door from being moved or lifted.

3

### Centre latch and hook

A combined central latch and anti-separation hook create a solid and rigid locking point.

4

### Claw hooks

Grips the door sash to the frame for extra strength and solidity.



### Smooth and silent

Multi-wheeled 'air-glide' running system keeps your new Patio door perfectly balanced whilst moving along its track, providing smooth and silent operation.



### Strength and security

Fitted with the revolutionary ModLok™ modular locking system, designed in partnership with Yale, combines unparalleled strength with the very highest levels of security.



### Safe from harm

Locking mechanism designed so that the four hook bolts never protrude into the room even when the door is open, this ensures there are no finger traps to harm small children.



**ESSEX TRADE FRAMES**

*supplying the trade*

[www.essextradeFrames.co.uk](http://www.essextradeFrames.co.uk)

Tel: 01376 395125

Email: [sales@essextradeFrames.co.uk](mailto:sales@essextradeFrames.co.uk)

Visit: 11 Wheatear Industrial Estate, Witham,  
Essex, CM8 3YY